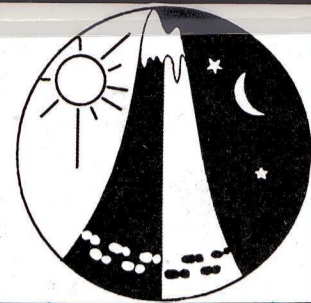




# Lunatic's Lurek



WARA

12 Hour Rogaine

12 May 1990

Julimar

LEGEND

Watercourse



Marsh



Dam



Track



Major Road



Property Boundary



Control



Hash House



Water Drop



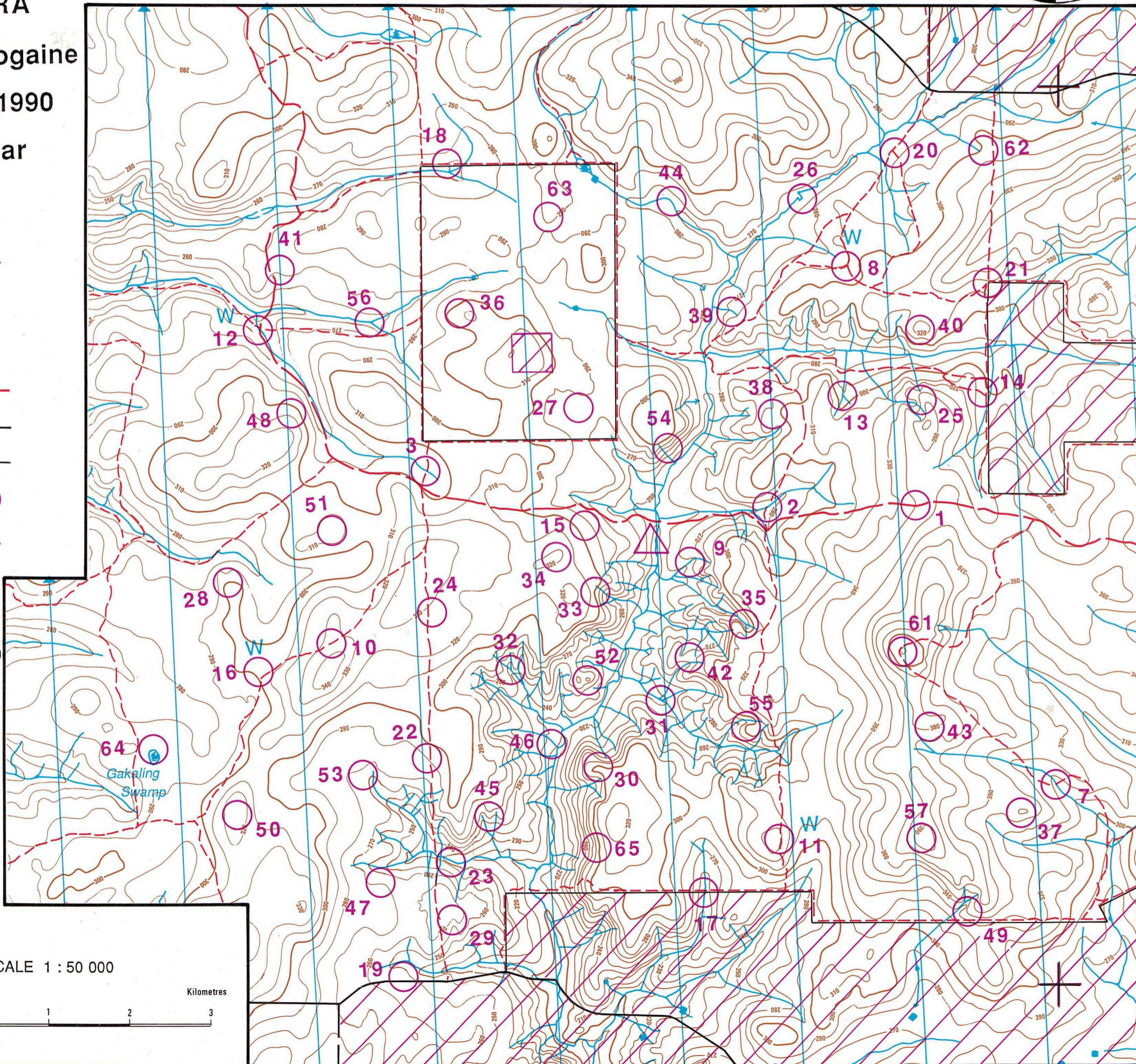
Setters: Julie Hartmann  
Fay Lewis

Vetters: Penny Dufty  
Sylvia Murphy

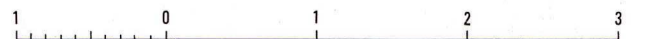
Cartographer: Fay Lewis

Topography reproduced from  
CALM map

Contour Interval 10 metres

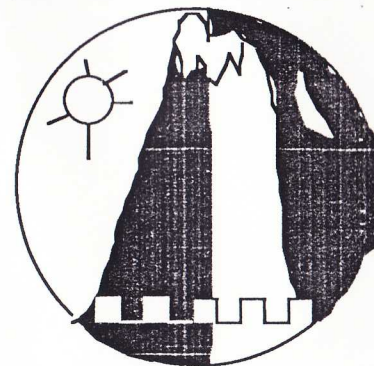


SCALE 1 : 50 000



Kilometres

No.	Description	Points
1	A survey post. 80m @ 140°	10
2	The watercourse/track intersection	10
3	The watercourse/track intersection	10
7	The watercourse/track intersection	20
8	The track junction	20
9	A watercourse junction (steep and deep)	20
10	The spur/track intersection	20
11	A bend in the track	20
12	Road name sign. 80m @ 240°	20
13	The watercourse junction	30
14	A gravel pit, 5m * 5m	30
15	Head of a gully	30
16	A track junction	30
17	The track/watercourse intersection	30
18	The watercourse/track junction (setter's sink!)	30
19	A gravel pit, 50m * 100m. N side on earth bank (Sally & Joanne's tree)	40
20	An overgrown gravel pit, 50m * 100m. N side on earth bank	40
21	A fence corner	40
22	A gravel pit, 2m * 7m. 100m @ 270°	40
23	A bend in the watercourse	40
24	A clearing (low medium and high shrubs), 40m * 60m. Centre	40
25	Head of the watercourse (views and great gums!)	50
26	The watercourse bend	50
27	A water trough	50
28	Head of a gully	50
29	Head of the gully	50
30	A boulder group (breakaway cliff) (views)	50
31	The overgrown eastern watercourse junction	50
32	The watercourse junction	50
33	A knoll (views)	50
34	The ridge. Highest part	50
35	The watercourse junction	50
36	Vegetation boundary, an outstanding tree	50
37	The summit	60
38	Head of the gully	60



WA Rogaining Association May 12, 1990

## LUNATIC'S LUCK

No.	Description	Points
39	A bend in the watercourse	60
40	The summit	60
41	A clearing (low and medium shrubs), 100m * 200m. N side	60
42	A knoll	60
43	Head of a gully	70
44	A bend in a track	70
45	A clearing (low shrub), 50m * 80m. N side (views)	70
46	A boulder, 2m high	70
47	Head of a gully	70
48	A clearing (low shrubs), 100m * 200 m. SW side, highest point	70
49	A boulder group (breakaway cliff), 2.5m high	80
50	The ridge. Highest part	80
51	The summit	80
52	The knoll (views and great gums!)	80
53	A clearing, 20m * 85m. W end	80
54	A knoll (views)	80
55	A knoll	80
56	The watercourse junction	80
57	The summit (views and great gums!)	80
61	The summit. Trig point	100
62	Head of the watercourse	100
63	A fence corner	100
64	Gakaling swamp. N side	100
65	Head of a gully	100